

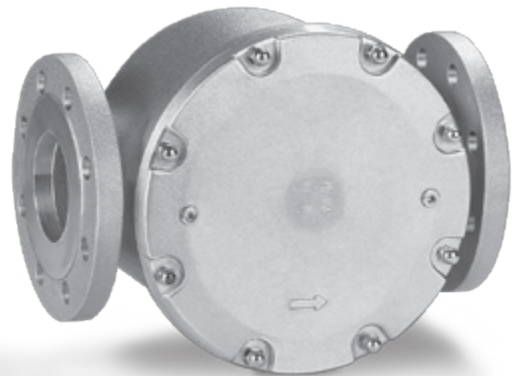
Gas filter GFK

Product brochure - GB
1.2.1.2 Edition 03.09



**krom
schroder**

- For the protection of downstream devices against blockage
- Very high throughput
- High purification efficiency
- Long life
- Easy-to-clean filter pad
- EC type-tested and certified



elster
Kromschroder



GFK..R

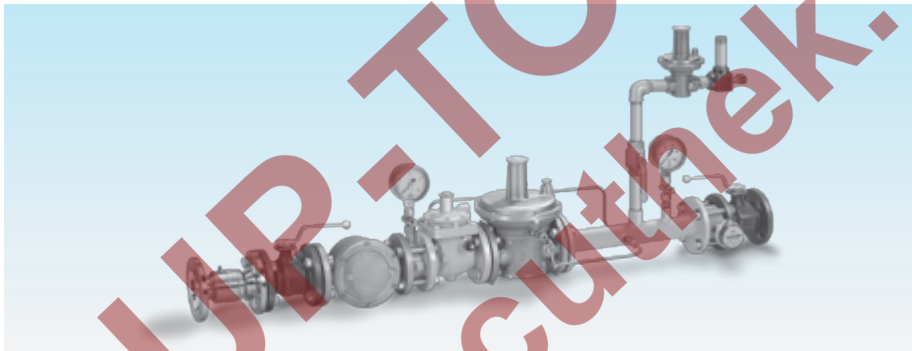


GFK..F

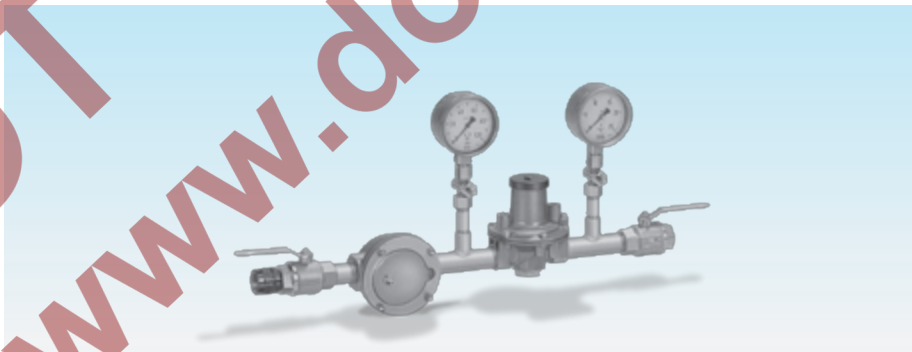
Application

Suitable for filtration of the fuel gas and combustion air supply to all gas consuming appliances.

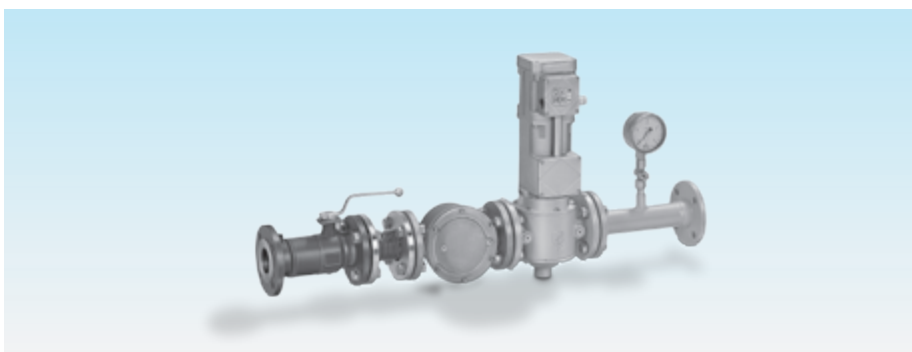
Application examples



Gas pressure control system with GFK..F



Pressure control system with GFK..R



Main gas shut-off device with GFK..F

Selection

Standard-range

	10	40	60	-3	-6
GFK 15R	●	●			●
GFK 20R	●	●			●
GFK 25R	●	●			●
GFK 32R	●	●			●
GFK 40R	●	●			●
GFK 50R	●	●			●
GFK 65R	●	●			●
GFK 40F	●		●		●
GFK 50F	●		●		●
GFK 65F	●		●		●
GFK 80F	●		●		●
GFK 100F	●		●		●
GFK 125F	●			●	
GFK 150F	●			●	
GFK 200F	●			●	
GFK 250F	●			●	

Order example

GFK 32R10-6

T-Product range

	N	A	40	-3
GFK 15T	●		●	●
GFK 20T	●		●	●
GFK 25T	●		●	●
GFK 40T	●		●	●
GFK 50T	●	●	●	●
GFK 65T	●	●	●	●
GFK 80T		●	●	●
GFK 100T		●	●	●

Order example

GFK 40TN40-3

Type code

Code	Description
GFK	Gas filter
15, 20, 25, 32, 40, 50, 65, 80, 100, 125, 150, 200, 250	Nominal diameter
T	T-product
R	Rp internal thread
F	Flanged connection to ISO 7005
A	ANSI flange
N	NPT internal thread
	Max. inlet pressure $p_{e \max}$.
10	1 bar
40	4 bar (58 psig)
60	6 bar
-3	Screw plug at the inlet and outlet
-6	Pressure test point at the inlet and outlet

NOT UP-TO-DATE
www.docuthek.com

Technical data

Gas type:
natural gas, town gas, LPG (gaseous), bio-
logically produced methane and air.

Max. inlet pressure p_e :
1 bar GFK 15 to 250,
4 bar (60 psig) GFK 15 to 65,
GFK 15T to 100T,
6 bar GFK 40 to 100.

Ambient temperature:
-15 to +80°C (5 to 176°F).

Continuous operation at high tempera-
tures accelerates the ageing of elastomer
materials.

Version to DIN 3386

Housing

GFK 15 to 100 made from AlSi.
GFK 125 to 250 made from sheet steel.
GFK..R: Rp internal thread connection to
ISO 7-1.
GFK..F: flanged connection to ISO 7005,
PN 16.
GFK..N: NPT internal thread.
GFK..A: ANSI 150 flanged connection.
Filter pad: polypropylene fleece
(standard 50 µm).

Pressure test points on the cover

GFK 15 to 100:
Inlet side: Rp 1/8 pressure test nipple,
Outlet side: Rp 1/8 pressure test nipple.
GFK 125 to 250:
Inlet side: Rp 1/8 plug,
Outlet side: Rp 1/8 plug.
GFK 15T to 100T:
Inlet side: Rp 1/8 plug,
Outlet side: Rp 1/8 plug.

Certification

EC type-tested and certified
pursuant to:

– Gas Appliances Directive (90/396/EEC)



Maintenance cycles

We recommend that a function check is car-
ried out every six months.

Depending on the operating conditions regu-
lar cleaning may be required.

Detailed information on this product

www.docuthek.com → Direct access

Search term: GFK

Kind of document: Technical information

Contact

www.kromschroeder.com → Sales

Elster GmbH
Postfach 2809 · 49018 Osnabrück
Strothweg 1 · 49504 Lotte (Büren)
Germany

T +49 541 1214-0
F +49 541 1214-370
info@kromschroeder.com
www.kromschroeder.com
www.elster.com

Kromschroder, a product
brand of the Elster Group



We reserve the right to make technical modifications
in the interests of progress.

Copyright © 2007 Elster Group
All rights reserved.