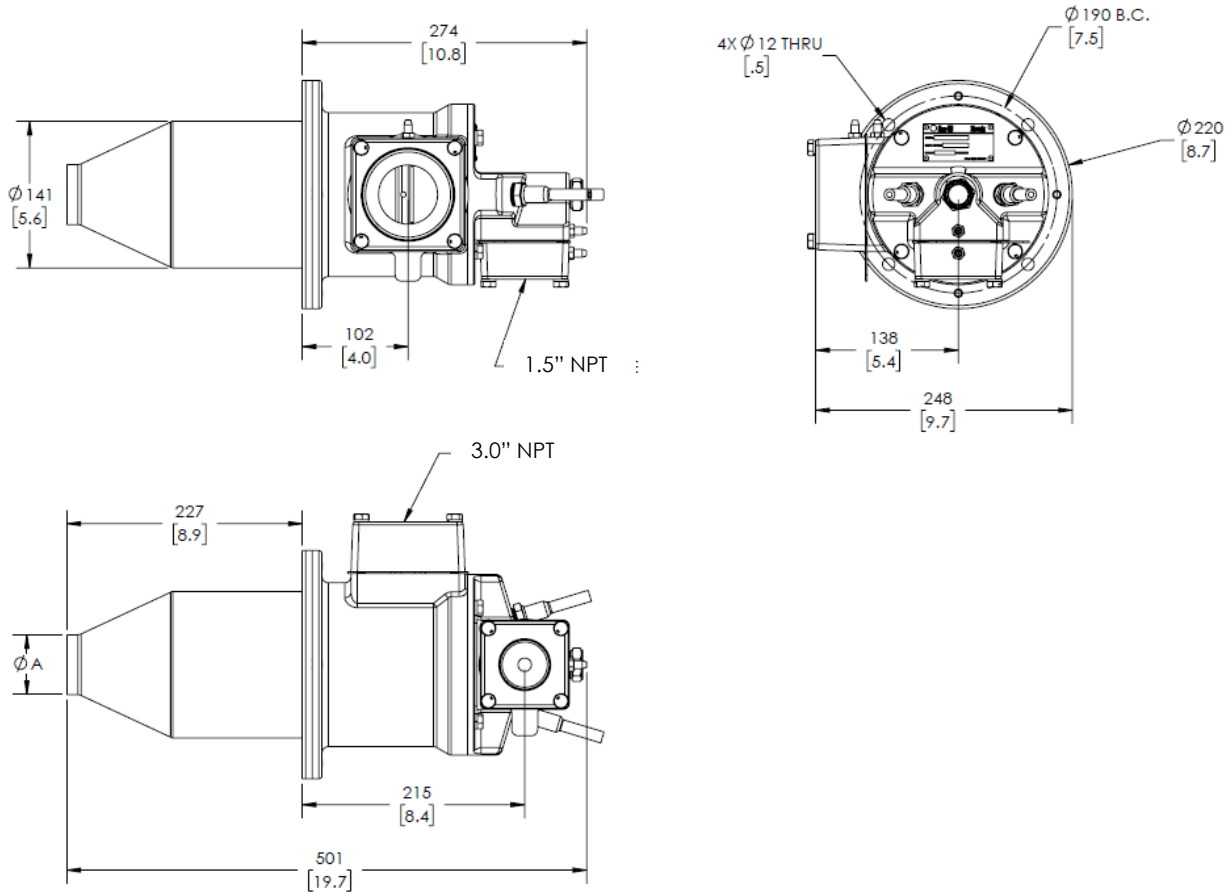


Specification Sheet Models VH100 - VH200

Product Dimensions

mm (inches)



Combustor Outlet Diameter

mm (inches)

Model	Dimension	High Velocity	Medium Velocity
VH100	ϕA	$\phi 54$ (2.1)	$\phi 76.5$ (3.0)
VH150	ϕA	$\phi 63.5$ (2.5)	$\phi 89$ (3.5)
VH200	ϕA	$\phi 85$ (3.4)	$\phi 105$ (4.1)

Model Specifications

Model Parameter		VH100		VH150		VH200	
Maximum Input, BTU/hr		1,000,000		1,500,000		2,000,000	
Minimum Input, BTU/hr (on-ratio)		100,000		150,000		200,000	
Minimum Input, BTU/hr (Fixed Air)		20,000		30,000		40,000	
Combustor Type High-velocity (HV), Medium-velocity (MV)		HV	MV	HV	MV	HV	MV
Inlet Fuel Pressure, "w.c.	Natural Gas	12.5	5.5	14.5	7.0	9.3	7.1
	Propane	15.0	8.0	11.0	8.0	13.0	11.0
Inlet Air Pressure, "w.c. 10% excess air at maximum input	Natural Gas	16.5	9.0	17.5	9.5	12.3	10.0
	Propane	17.0	8.0	14.0	6.0	17.0	13.0
High fire Visible Flame Length, inches Measured from the outlet end of the combustor	Natural Gas	33	38	38	43	34	38
	Propane	34	37	42	44	36	38
Approximate Flame Velocity, ft/s Approximately 10% excess air at maximum output		600	300	650	340	480	320
Maximum Operating Temperature		1750 °F					
Maximum Combustion Air Temperature For higher temperatures contact Algas-SDI		300 °F					
Flame Detection	Flame Rod	Yes		Yes		No	
	UV Scanner	Yes		Yes		Yes	
Fuels For any other mixed gas, contact Algas-SDI.		Natural Gas, Propane					
Burner Weight (lbs)		47		47		47	

- All information is based on laboratory testing in neutral (0 "w.c) pressure chamber. Different chamber conditions may affect the data.
- All inputs based upon standard conditions; 1 atmosphere, 70°F (21°C), and higher heating values (HHV).
- Algas-SDI reserves the right to change the design and/or configuration of Algas-SDI products at any time.

Setup Specifications

ΔP Across Orifice vs. Load (on-ratio operation)

				Input BTU/hr		
Model	Gas	Taps	Orifice Size (mm)	500,000	750,000	1,000,000
				ΔP Across Orifice ("wc ± 5%)		
VH100	Natural Gas	C-D	18.0	1.0	2.0	3.6
	Propane	C-D	13.0	1.0	2.2	4.2
	Air	A-B	57.0	1.5	3.2	6.4
				750,000	1,125,000	1,500,000
VH150	Natural Gas	C-D	20.0	1.0	2.6	4.2
	Propane	C-D	18.0	0.75	1.5	2.6
	Air	A-B	66.0	1.5	3.2	6.6
				1,000,000	1,500,000	2,000,000
VH200	Natural Gas	C-D	24.0	1.0	2.4	4.2
	Propane	C-D	18.0	1.3	2.6	4.4
	Air	A-B	70.0	1.6	3.6	6.0

- Plumbing of air and gas will affect accuracy of orifice readings.
- All information is based on acceptable/established air and gas piping practices.

