

L404F

Pressuretrol Controller



The L404F senses pressure changes and activates internal switch, resulting in ON/OFF action of an electric circuit.

The controller makes and breaks the connection to solenoid valves or electric motor valves, and is used for pressure control involving fluids, air or steam. It is also used as a limit control or alarm switch.

Specifications

Case	Rolled steel plate
Ambient temperature	-20 to +65°C
Mass	900g
Mounting	R 1/4 (PT 1/4), Rc 1/4 (PT 1/4)

Contact Ratings

Load	120Vac	240Vac	120Vdc	240Vdc
Full load	8.0A	5.1A	-	-
Locked rotor	48.0A	30.6A	-	-
Resistive load	20.0A	20.0A	0.2A	0.1A

Sensing Element Material

Pressure setting range (kPa)	Bellows	Pipe connection
0 to 100	Phosphorous bronze	Sulfur free-cutting steel
0 to 350		Free-cutting brass
35 to 1000		
70 to 2000		

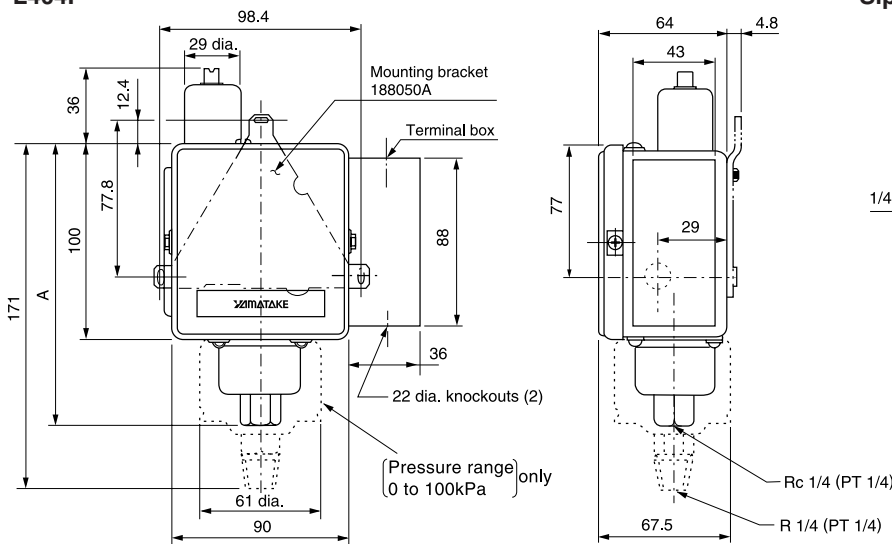
Selection Guide

Model No.	Pressure setting range (kPa)	Midscale differential (adjustable)		Maximum allowable pressure (kPa)	Switch action
		Min. kPa	Max. kPa		
L404F200	0 to 100	10	40	160	L404F (microswitch) On pressure rise; OFF between \overline{R} - \overline{S} contacts
L404F204	0 to 350	30	100	600	
L404F208	35 to 1000	50	150	1600	
L404F212	70 to 2000	150	350	2500	
J-14026	Siphon loop (separate order)				ON between \overline{R} - \overline{W} contacts
188050A	Mounting bracket (3 M4 and 3 M5 screws attached) (separate order)				(SPDT)

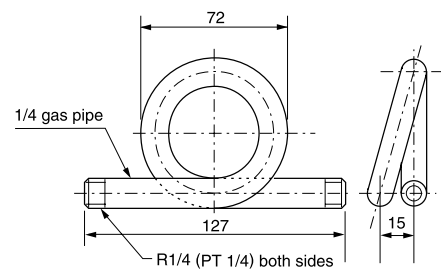
Dimensions

(Unit: mm)

• L404F



• Siphon loop J-14026



Dimension

Model No.	A
L404F204	143
L404F208	143
L404F212	140